



**MARLBOROUGH  
DISTRICT COUNCIL**

# Coastal Monitoring Programme

Marlborough Marine Futures, Picton, March 8, 2015



Dr Steve Ulrich, Environmental Scientist

# Marlborough's coastal marine area



**725,000 hectares**

**1815 km coastline**

**Diverse range of environments**

**Threatened and iconic species**

**Aquaculture, fishing, tourism, transport, recreation, cultural, township and residential activity**



# Values



Photo credits: Rob Davidson,, Peter Hamill, Nature Tours, Marine Farm Association, Steve Urlich



# Pressures



Stuff Home **Marlborough Express**  
News Sport Business Your Marlborough Opinion Win

## Dredging damages seabed



# Scientific monitoring

- Council approved strategy 2012
- Good quality data for decisions
- State of Environment Monitoring
- Community information

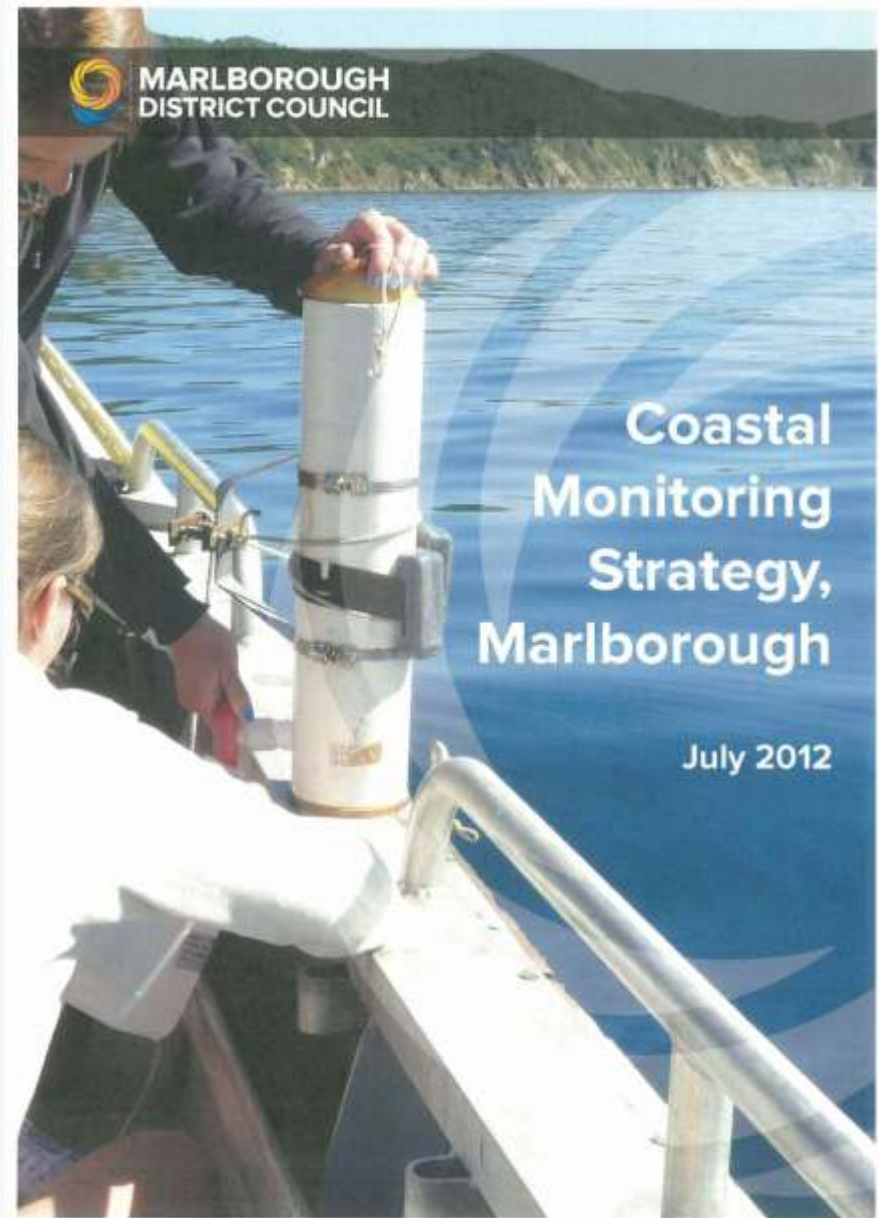


EXPLORE DATA | LEARN | GET INVOLVED | ABOUT | 

LAWA connects you with New Zealand's environment through sharing scientific data



Or explore topics





# Current projects



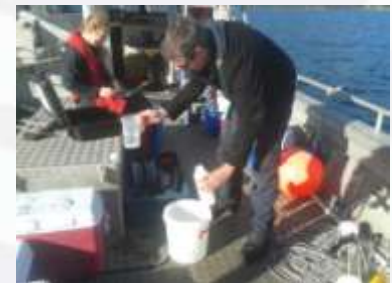
1. **Water quality**
2. **Hydrodynamic models**
3. **Significant marine sites**
4. **Estuaries**
5. **Ship-wake**
6. **Seabed dynamics**
7. **Picton Harbour**
8. **Website/data mgmt**



# Strategy Objective: Provide water quality data

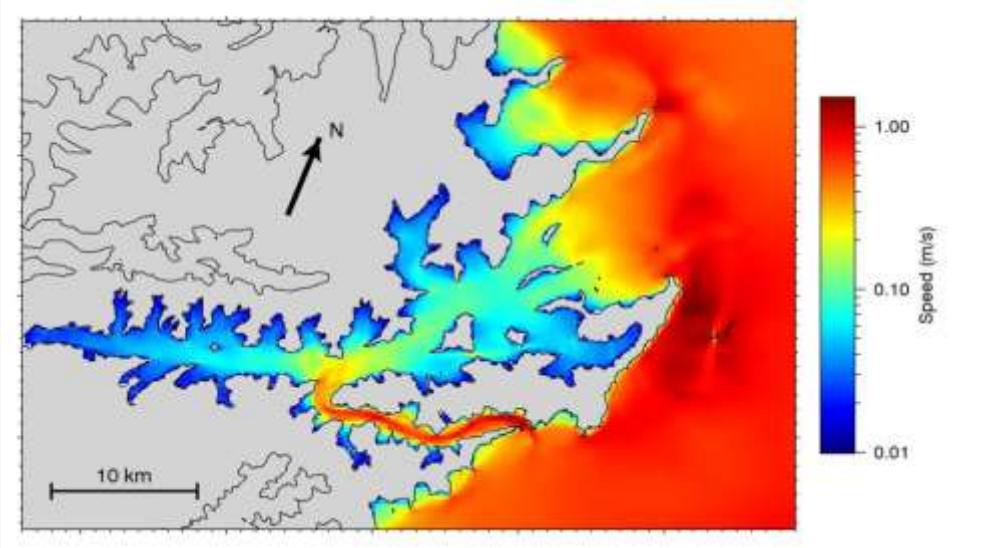
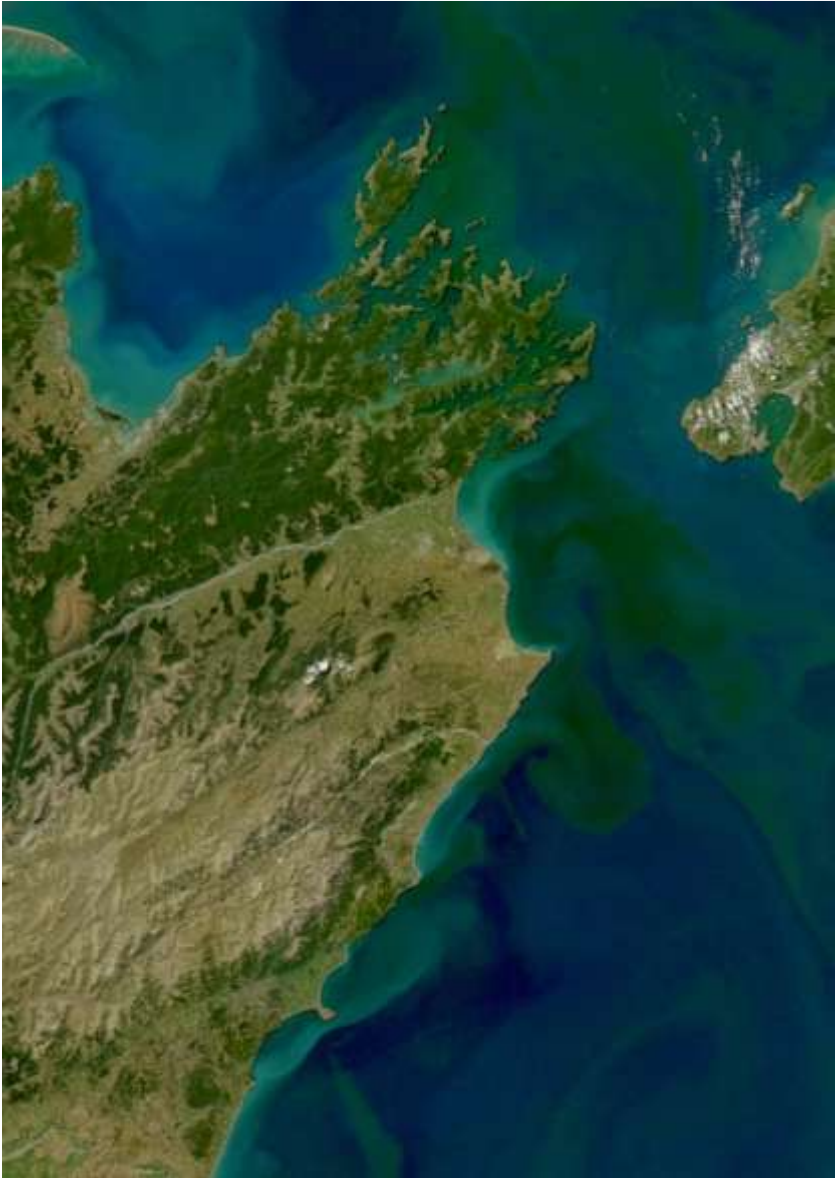


- 11 sites monthly in both Pelorus and QCS
- Nutrients (N, P, Si)
- Temperature, salinity, dissolved O<sub>2</sub>
- Phytoplankton, Chl a,
- Status and trends





# Strategy Objective: build and develop hydrodynamic models











<http://www.marlborough.govt.nz/Environment/Coastal.aspx>

steve.urlich@marlborough.govt.nz

[www.lawa.org.nz](http://www.lawa.org.nz)

